

STOCKHOLDER ANNOUNCEMENT

ATTN:
STAKEHOLDERS

ANNOUNCEMENT



TRANSITIONAL
LISTING



METAXCHANGE.AI
THE METAXCHANGE UNIVERSE



METAXCHANGE.AI MANAGEMENT & BOARD DECISION:



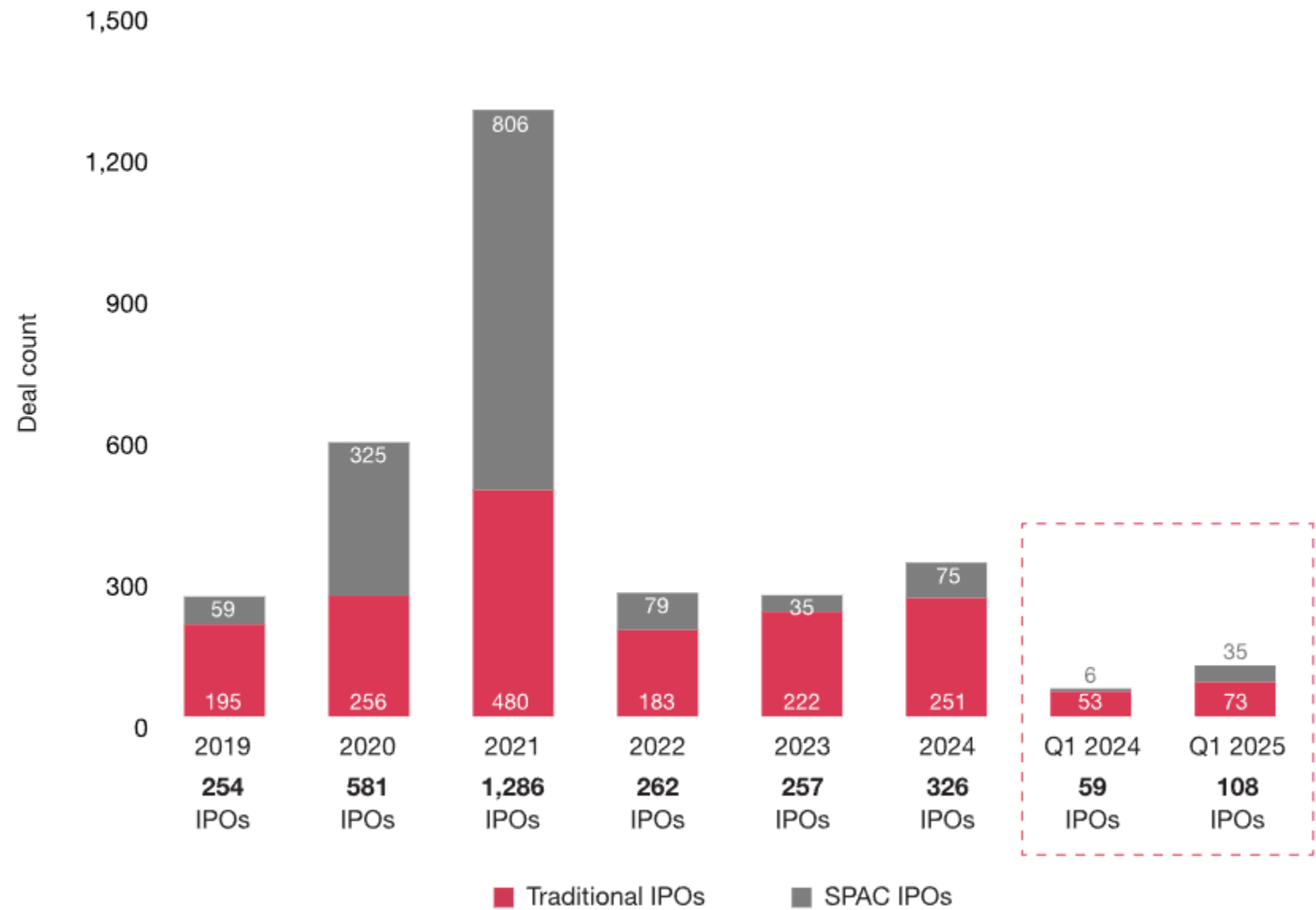


IPO market faces renewed uncertainty





IPO filings since 2019





METAXCHANGE AI®, INC.

April 15, 2025

Press Release:

FORT LAUDERDALE, FL. USA / April 15, 2025

Announcing METAXCHANGE's NASDAQ listing with the NPM.

NPM announced the sign-up of METAXCHANGE.AI, INC., to enroll and provide the ability to buy/sell the company's shares and serve its stakeholders.

METAXCHANGE.AI, INC., has signed up to [the Nasdaq Private Market](#) to enroll and provide the ability to buy/sell the company's shares and serve its stakeholders, and shareholders/investors



METAXCHANGE.AI, INC.

NASDAQ PRIVATE MARKET LISTED.

METAXCHANGE.AI

THE METAXCHANGE UNIVERSE

Public



Primary

VS.

Private

Secondary

Nasdaq
Private Market

Unlock stock picks and a broker-level newsfeed that powers Wall Street.

Upgrade Now

×



Nasdaq Private Market Launches Next-Generation, Electronic Secondary Liquidity Platform SecondMarket™

Nasdaq Private Market, LLC

September 19, 2024 • 4 min read



Nasdaq Private Market

Nasdaq Private Market, LLC

Groundbreaking Technology Significantly Enhances Its Private Company Tender Platform While New Marketplace Delivers Best-in-Class Private Market Data and Efficient Execution for a Flat 1% Fee

KYC/AML

VERIFY



Verify with your phone

 amoradi@netstairs.com

A code was sent to **+1 XXX-XXX-2271**. Enter the code below to verify.

Carrier messaging charges may apply

Enter Code

Continue

[Verify with something else](#)

[Back to sign in](#)

Trading Marketplace

Powerful private market trading technology and actionable data opens the door to opportunities. Log in to our purpose-built platform that reduces friction and allows you to transact with confidence.



Nasdaq Private Market



Nasdaq Private Market

Company type	Private
Industry	Finance and Marketplaces
Founded	2004 (as Restricted Stock Partners, Inc.)
Founder	Eric Folkemer Nelson Griggs
Headquarters	New York City, U.S.
Area served	Worldwide
Key people	Eric Folkemer (president & Chief Operating Officer) Tom Callahan (CEO)
Products	Marketplace Services Financial Data
Number of employees	100+ (2009)
Parent	Nasdaq, Inc.
Website	www.nasdaqprivatemarket.com

NPM has facilitated more than \$40 billion in transactional volume and has worked with 400+ private companies and 100,000+ employees, stakeholders, and investors. NPM offers private companies and investors different solutions, including tender offers, auctions, block trades, and custom company marketplaces. In 2021, NPM spun off from Nasdaq to become its own, independent company, receiving strategic investments from Silicon Valley Bank, Citi, Goldman Sachs, Morgan Stanley, and Allen and Co.^[1] SecondMarket Solutions changed its name to NASDAQ Private Market after being acquired by NASDAQ in a joint venture with SharesPost. **In October 2015, NASDAQ took full ownership of NASDAQ Private Market.**^[2] Prior to using the name SecondMarket, the company was known as Restricted Stock Partners, Inc.



Nasdaq Private Market

Hi Ahmad,

You've been granted access to the METAXCHANGE AI Issuer Workstation.

Please use the link below to access the NPM Platform.

Sign NASDAQ Term Sheet

NPM Platform Terms of Use and Privacy Policy

Effective Date: Jan 15, 2025 10:11 AM

NPM TERMS OF USE

Updated December 23, 2024

1. ACCEPTANCE

These NPM Terms of Use ("TOU") set forth the terms and conditions that apply for access to and use of the NPM Platform, the NPM website, and any of the services and applications available on or via such platform or website (together the "Platform") by the individual reading these Terms of Use and/or any party which has agreed to these terms as incorporated into another agreement ("You"; and "Your" will be construed accordingly). The Platform is owned and operated by Nasdaq Private Market, LLC, a Delaware limited liability company, together with certain of its affiliates, including NPM Securities, LLC (collectively, "NPM", "Nasdaq Private Market", or "We").

By registering, logging onto, or accessing the Platform or clicking on the 'I HAVE READ AND I ACCEPT THE TERMS OF USE' button after scrolling through these TOU, You are accepting these TOU. By accepting these TOU, You represent and warrant that: (a) You have read and understand these TOU; (b) You have the capacity to be bound by them; and (c) You agree to the TOU. If You do not agree to the TOU, You are not authorized to access or use the Platform. If You are accepting these TOU on behalf of Your employer or another entity, You represent and warrant that: (x) You have full legal authority to bind Your employer, or the applicable entity, to these TOU in which case the term "You" or "Your" will refer and apply to such employer or another entity; (y) You have read and understand these TOU; and (z) You agree, on behalf of the party that You represent, to these TOU. If You do not have the legal authority to bind Your employer or the applicable entity, please do not register, log onto, or access the Platform or click on the 'I HAVE READ AND I ACCEPT THE TERMS OF USE' button—You are not authorized to use the Platform. You may print or download a copy of the TOU for Your records. If You are using and accessing the Platform as an employee and on behalf of a customer entity that has an agreement with NPM governing use of the Platform, then Your access and use are also governed by the terms of that agreement. If a conflict exists between a term in these TOU and a term in that other agreement, the terms in the other agreement control. If You are an individual accessing the Platform in Your personal capacity as a participant in a liquidity program or auction or other event, Your access and use of the Platform is governed by these TOU.

2. ADDITIONAL TERMS: PRIVACY POLICY AND DATA PROTECTION; SECURITY; NPM DATA

A. Our privacy policy (the "Privacy Policy") located at www.nasdaqprivatemarket.com/privacy-policy (and any successor hyperlink) explains how NPM treats Your personal information You provide when You access and use the Platform.

Our data processing addendum (the "DPA") located at www.nasdaqprivatemarket.com/data-processing-addendum (and any successor hyperlink) explains how NPM processes any "Personal Data" (as defined in the DPA).

By agreeing to the TOU, You are expressly agreeing to the terms of the Privacy Policy and the DPA.

Both the Privacy Policy and DPA may be updated from time to time at the sole discretion of NPM. Changes are effective upon posting to the NPM website, or as otherwise specified upon posting.

Additional terms apply to the extent Your use of the Platform and/or NPM services includes certain specialized services: (i) Data Services. Access to NPM data (including Tape D™) is subject to additional data-specific terms located at www.nasdaqprivatemarket.com/data-terms/; (ii) Paying Agent Services. If NPM acts as Your paying agent (which includes all transactions NPM facilitates through NPM Securities, LLC), then the following additional terms apply: www.nasdaqprivatemarket.com/paying-agent-terms/.

B. NPM will take appropriate security precautions reasonably designed to prevent malicious or unauthorized access to the Platform and to maintain the accuracy and integrity of user and customer information, which may include (a) appropriate protection barriers, firewalls, and logically secure areas, and (b) appropriate levels of internal controls for granting access to any materials used in performing the services, in each case designed to protect personal data and other materials from malicious or unauthorized access. NPM shall establish and maintain environmental, safety, and facility procedures, data security procedures, and other safeguards reasonably designed to protect against the destruction, corruption, loss, or alteration of customer information and to prevent access, intrusion, alteration, or other interference by any unauthorized third parties of the same, that are no less rigorous than those maintained by NPM for its own information. NPM has implemented industry standard measures reasonably designed to protect user-submitted access from existing access to the data processing equipment where customer information and/or Personal Data is processed and/or stored.

Your Panel



Issuer Workstation

METAXCHANGE AI
Issuer Admin

Dashboard

Accounts

General

Programs

Dashboard

Trading Insights ⓘ



Total Transaction Volume ⓘ
-- USD



Transaction Volume ⓘ
-- USD

Action Items ⓘ

Verify Holdings



Matches - Manage Transfers




Sign Agreements



Trade History Over Time ⓘ

Action List

Action items

- 
- ☐ Share the sign-up link for the NPM platform with MetaExchange shareholders who are interested in selling their shares.
 - ☐ Share the press release announcing MetaExchange's NASDAQ listing with NPM for review and approval before publishing.
 - ☐ Provide NPM with the list of existing MetaExchange shareholders (first name, last name, share quantity) to get them set up on the NPM platform.

Hi **YOUR NAME**

Complete onboarding to enable direct access to our Marketplace.

[Get Started](#)

1

Identity Verification

Confirm your identity to keep you and NPM safe

2

Marketplace Agreement

Covers the Terms and Conditions for access to NPM's marketplace and services to you

For Illustration & Sample Demo

Welcome to the METAXCHANGE AI market

Get started selling your METAXCHANGE AI shares. Keep more of your proceeds with our low 1% flat fee.

Negotiate and accept bids directly on the NPM platform with our network of potential buyers. You'll get alerts when buyers are interested in your offer.

We do not share information about bids and offers with issuing companies, so you remain anonymous.



Last Round Financing Activity

As of Apr 5, 2025

Most Recent Estimated Valuation ⓘ

\$--

Last Round Price Per Share ⓘ

\$--



Sell Your Shares in METAXCHANGE AI ⓘ

✓ 1000+ potential buyers

✓ Accept or negotiate directly

✓ 1% flat fee

✓ Remain anonymous

✓ Get alerts



Complete onboarding



Post Your Offer



Match with a Buyer



Get Paid

Your Offer

Common Stock

\$33.00 / sh × 20,000 = \$660,000

Interested Buyers will be notified once your Offer is live on the METAXCHANGE AI Market. Click below to "Sell Your Shares".

[Sell Your Shares](#)



METAXCHANGE AI



METAXCHANGE AI Market

My Holdings

My Orders

My Opportunities

Become a Buyer

Sell Your Shares

Order Terms & Affiliate Disclosure



By submitting this order, you agree that i) the order is exclusive to the NPM platform and that you will not post the same order with any other party from the time the order is submitted, until transaction completion, or the cancellation of such order; and ii) the order is subject to any applicable NPM fees in the event this order is matched and settled. You also acknowledge that the order size and order price submitted is considered an actionable order ("Firm Order") that is exclusive to NPM and may be matched with a counterparty. If matched, you will be prompted to sign a Stock Transfer Notice Agreement ("STNA"). Upon the completion of the STNA, the order is a contractually binding agreement with the counterparty and subject to the terms and conditions of such agreement. All Firm Orders are good for 30 days unless canceled sooner.

Are you a Company Insider or Affiliate of the Company? ⓘ

☒ Yes ☐ No ☐ I am not sure

Your Signature

Corporate Acct or Individual Signatures

Your full legal name

Cancel

I Confirm

Account

Lourdes Pernas Moradi
NPMS - dc9d32ae • Individual

Your Offer Details

Firm

Common • Aggregated

\$10.00 / sh × 80,000 = \$800,000

✓ This order is ready to be posted to the marketplace

Total Size (Shares) 80,000

Estimated Gross Proceeds \$800,000.00

Execution Fee 1%

Offer Amount

Your Estimated Net Proceeds

Hi **YOUR NAME**

Complete onboarding to enable direct access to our Marketplace.

[Get Started](#)

1

Identity Verification

Confirm your identity to keep you and NPM safe

2

Marketplace Agreement

Covers the Terms and Conditions for access to NPM's marketplace and services to you



Welcome to the METAXCHANGE AI market

Get started selling your METAXCHANGE AI shares. Keep more of your proceeds with our low 1% flat fee.

Negotiate and accept bids directly on the NPM platform with our network of potential buyers. You'll get alerts when buyers are interested in your offer.

We do not share information about bids and offers with issuing companies, so you remain anonymous.



Sell Your Shares in METAXCHANGE AI



✓ 1000+ potential buyers

✓ Accept or negotiate directly

✓ 1% flat fee

✓ Remain anonymous

✓ Get alerts



Complete onboarding



Post Your Offer



Match with a Buyer



Get Paid

You are Selling

Under Review

\$10.00 / sh × 80,000 = \$800,000

Direct
Common

Expires on May 7th 4:46 PM (EDT)

[Review My Offer](#)

Last Round Financing Activity

As of Apr 9, 2025

Most Recent Estimated Valuation ⓘ

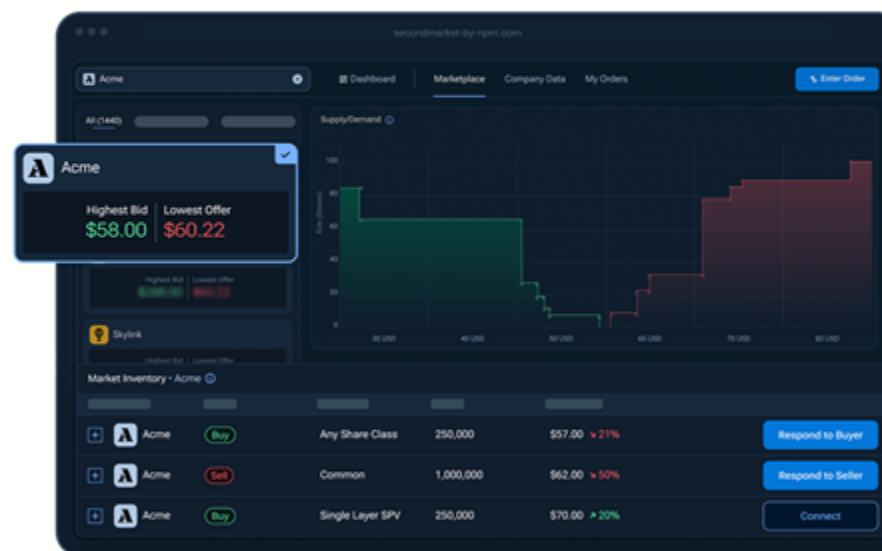
\$--

Last Round Price Per Share ⓘ

\$--

Inbox Notices

Accredited Individual Investors Now Eligible to Buy Shares on SecondMarket®



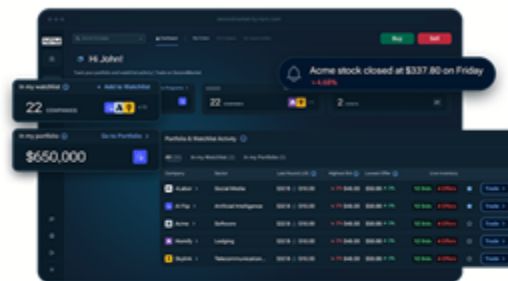
SecondMarket can now service individual accredited investors. Complete the accreditation survey to see if you're eligible to buy shares in innovative companies before they go public.

When you

Sign Up

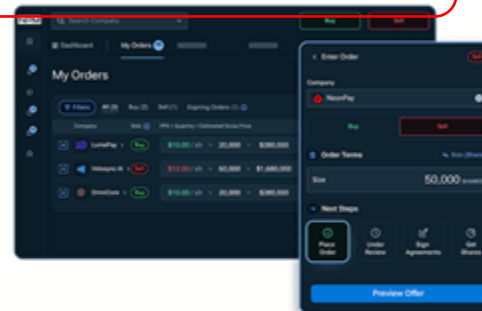
Log In

View the Market



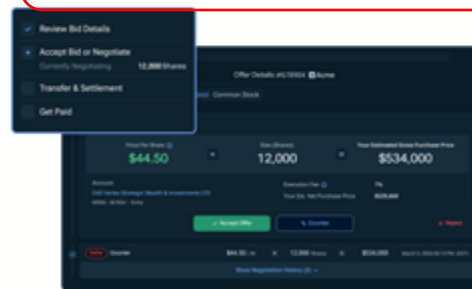
View pricing, funding history, current bids, and offers.

Post a Bid



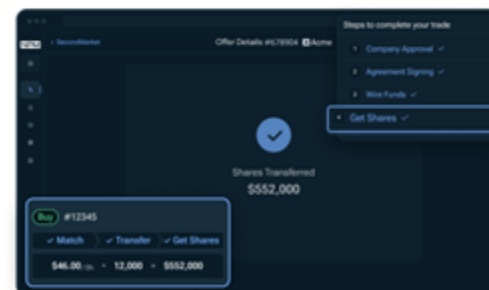
Post buy and sell orders or match with existing seller or buyer orders.

Negotiate Your Trade



Directly negotiate live bids and offers with visibility throughout the whole process.

Transfer Funds + Settle



Leverage NPM technology to manage fund transfers and share settlement.



Newsroom

Company Overview ▾

Press Releases

Journalist Resources ▾

Search newsroom



August 8, 2024 at 8:30 AM Eastern



Nasdaq Private Market Adds Bank of America to Consortium of Investors

NEW YORK, NY / SAN FRANCISCO, CA – [Nasdaq Private Market \(NPM\)](#), a leading provider of secondary liquidity solutions to private companies, employees, and investors, announced today that it has added **Bank of America** as an investor. NPM's existing investor consortium of premier global financial institutions has helped drive the company's success since its spinout from Nasdaq in 2021.

This announcement comes following the January 2024 closing of the company's \$62.4 million Series B financing round led by **Nasdaq** with participation from **Allen & Company**, **Citi**, and **Goldman Sachs**, and with new investments from **BNP Paribas**, **DRW Venture Capital**, **UBS**, and **Wells Fargo**. NPM plans to leverage Bank of America's investment to accelerate new product development and global growth.

*"We are incredibly proud to welcome Bank of America as an investor. Bank of America and NPM share a vision of creating a more fair, transparent, and efficient private market," said **Tom Callahan, Chief Executive Officer, Nasdaq Private Market**. "They join a prestigious consortium of 10 of the world's most influential financial institutions with a common goal of bringing this \$3.5 trillion asset class into the modern age of efficient electronic markets. Together, we are working to ensure entrepreneurs and risk capital can meet more efficiently so the American innovation economy can grow and prosper."*



Nasdaq Private Market

Categories

[Global Investment Banking and Global Markets](#)

New An Open Letter to Millions of U.S. Private Company Employees [Read More →](#)



[Who We Serve](#)

[Our Products](#)

[About Us](#)



[Sign Up →](#)

[Log In →](#)

LOW 1% FEE TO BUY + SELL PRIVATE COMPANY STOCK.*

LIQUIDITY PROGRAMS + TRADING MARKETPLACE.

You're Building the Future. Let Us Help Build Yours.

[Employees →](#)

[Investors →](#)

[Private Companies →](#)

Liquidity solutions transforming hard-earned equity into wealth. \$50 billion in value generated for employees, investors, and private companies.



Bytedance



Epic Games



Fanatics



Discord



Rippling



Ripple



Anduril

[Who We Serve](#)[Our Products](#)[About Us](#)[Sign Up →](#)[Log In →](#)

SecondMarket™ – A premier secondary trading platform for private companies, employees + investors from Nasdaq Private Market.

TRADING MARKETPLACE



SecondMarket™ Trading Platform

Learn about the Marketplace + Workstations That Connect Employees, Investors + Companies.



Employee Trading: Sell Stock

Sell Shares + Discover the Value of Your Equity.



Investor Trading: Buy + Sell Stock

Trade Shares + Access Market Insights.



Bank + Broker Technology

Trading Technology for Banks + Brokers.

COMPANY PLATFORM + LIQUIDITY PROGRAMS



Tender Offers

Custom Corporate-Sponsored Liquidity Programs.



Auctions + Capital Introduction

Custom Corporate-Sponsored Liquidity Programs with Price Discovery.



Option Extensions, RSUs, M&A + More

Sell Vested Units + RSUs. Manage M&A Documents + Payments. Convert Stock Options.



Pre-Direct Listing Programs

Bespoke Continuous Secondary Company Marketplaces for Pre-Direct Listings.

SETTLEMENT TECHNOLOGY



Transfer + Settlement

End-to-End Workflow + Dashboards for All Transfer Activity.

DATA + ANALYTICS



Tape D™ - Data

Differentiated Trading Insights, Valuation Data + Market Intelligence.



Company Profiles

View Firmographic Information on Trending Private Companies.

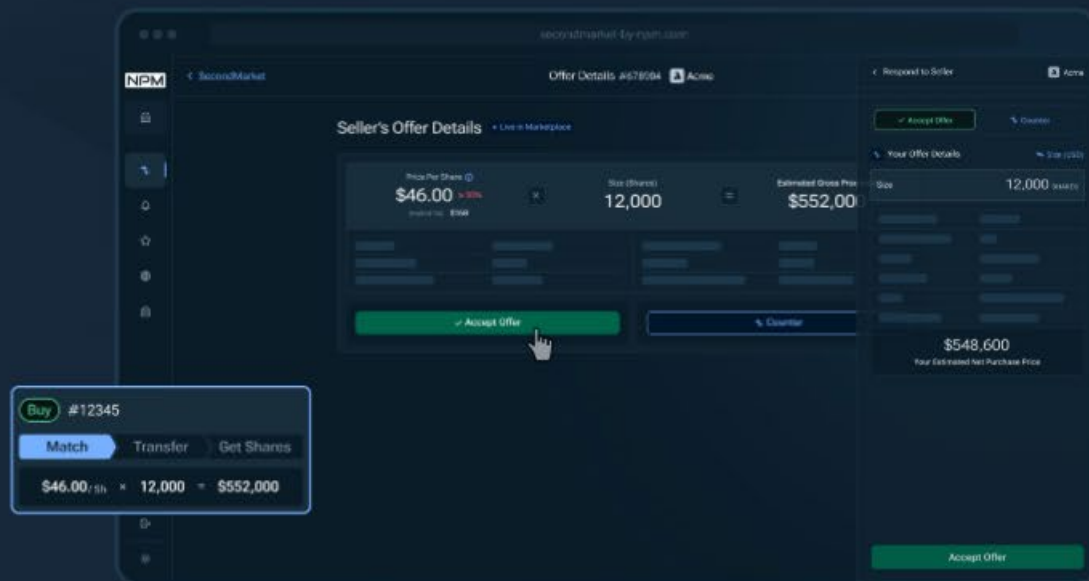
[Who We Serve](#)[Our Products](#)[About Us](#)[Sign Up →](#)[Log In →](#)[Home](#) / [Who We Serve](#) / [Investors](#)

BUY + SELL PRIVATE COMPANY
STOCK.

LOW 1% FEE TO
TRANSACTION.*

Invest Intelligently in Pre-IPO Companies

Sign up now to access the SecondMarket® trading marketplace from NPM. Explore current inventory, submit orders to buy or sell, and view data on industry disruptors.



[Back to Nasdaq Private Market](#)

Transaction Details

Type of Investor

Select



Individual Accredited Investor

VC / Growth Equity

Private Equity

Family Office

SPV / Secondary Fund

Mutual Fund / Asset Management

Hedge Fund / Crossover Fund

Typical Investment Size

Select



Under \$100K

\$100K - \$500K

\$500K - \$2M

\$2M - \$10M

\$10M+



[GET STARTED](#) [LOGIN](#) [KMEDIA](#) [MXCG.AI](#) [CONTACT](#)



Digital Media Hub
Serving Brands & Distributors.

[SIGN IN](#)

or

[GET STARTED](#)



METAXCHANGE.AI

THE METAXCHANGE UNIVERSE

Contact: amoradi@mxcg.ai